

MONTHLY MEMBERSHIP PROGRESS REPORT

LOCATION NIGERIA

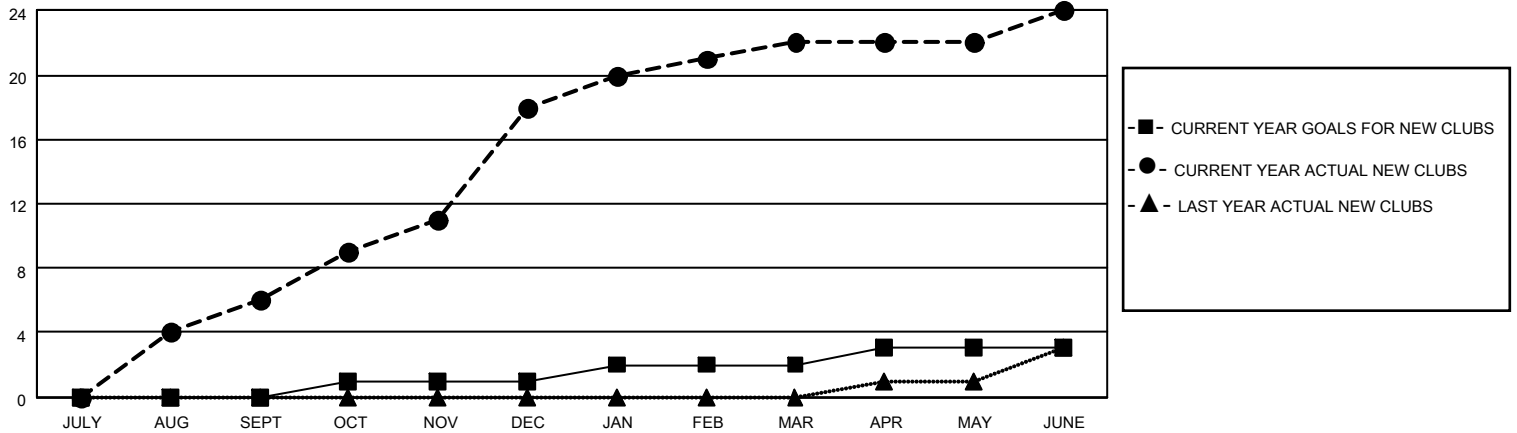
District 404 B1

Results as of: 6/30/2021

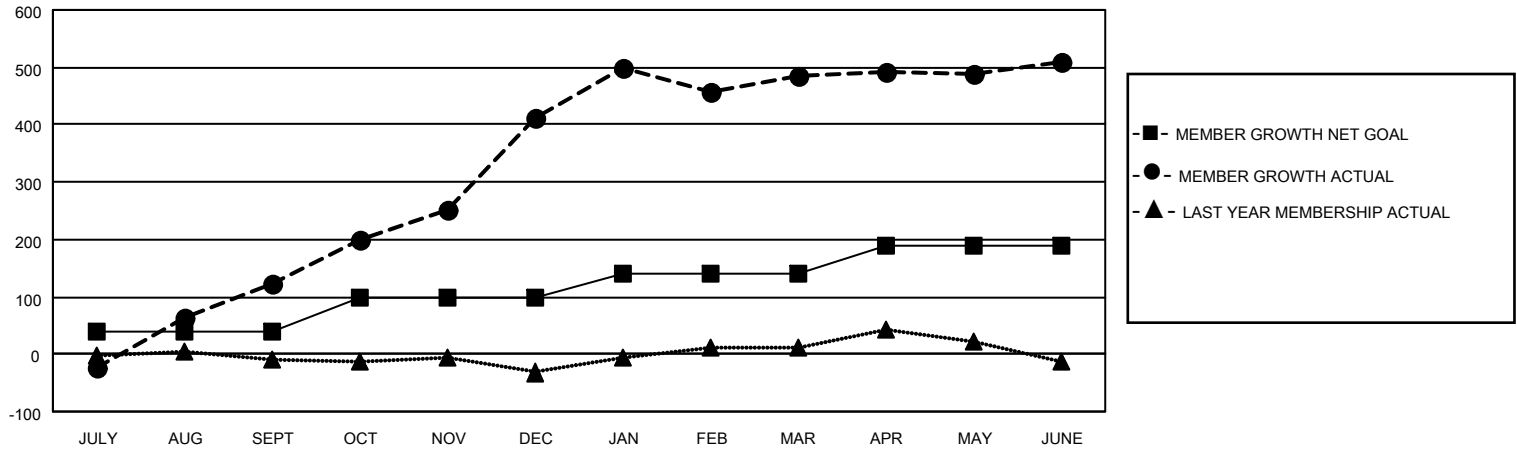
| Clubs | | | |
|-----------------------|---------------|-----------|---------------|
| RESULTS FOR 2020-2021 | | | |
| QUARTER | NEW CLUB GOAL | NEW CLUBS | DROPPED CLUBS |
| JULY/AUG/SEPT | 0 | 6 | 1 |
| OCT/NOV/DEC | 1 | 12 | 0 |
| JAN/FEB/MAR | 1 | 4 | 4 |
| APR/MAY/JUNE | 1 | 2 | 0 |

| Members | | | |
|-----------------------|------------------------|----------------------|-------------------------------------------------|
| RESULTS FOR 2020-2021 | | | |
| QUARTER | MEMBER GROWTH NET GOAL | MEMBER GROWTH ACTUAL | DROPPED MEMBERS ACTUAL (including transfers) |
| JULY/AUG/SEPT | 40 | 266 | 128 |
| OCT/NOV/DEC | 60 | 558 | 256 |
| JAN/FEB/MAR | 40 | 180 | 102 |
| APR/MAY/JUNE | 50 | 164 | 131 |

GOALS AND ACTUAL NEW CLUBS CUMULATIVE



GOALS AND ACTUAL MEMBERS CUMULATIVE



DROPPED CLUBS: 5

90 CLUBS OF 109 ADDED 1 OR MORE NEW MEMBERS

GENDER DISTRIBUTION

MALE 1,657 (63.71%)
 FEMALE 944 (36.29%)

DROPPED MEMBERS

[CLICK HERE FOR CUMULATIVE MEMBERSHIP DATA](#)

| | |
|----------------|------------|
| DECEASED | 13 |
| CLUB CANCELLED | 66 |
| OTHER | 539 |
| TOTAL | 618 |

| | |
|---------------------------------|-----|
| TOTAL FAMILY UNIT MEMBERS | 202 |
| FAMILY MEMBERS PAYING HALF DUES | 106 |